

Kotaro Hara and Jon E. Froehlich

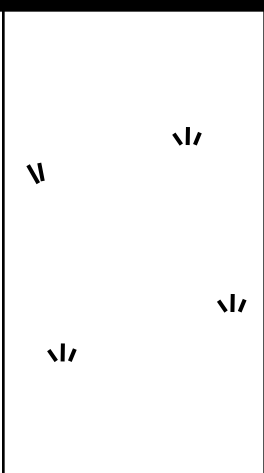
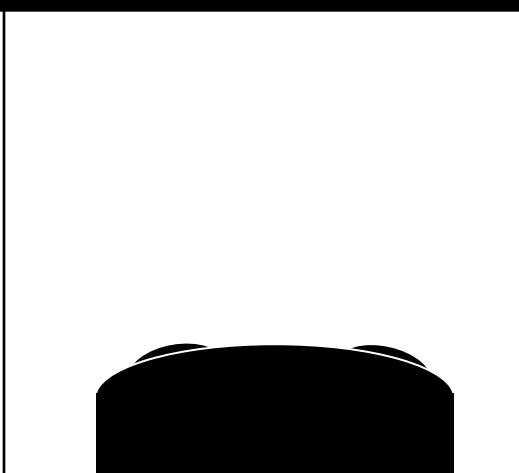
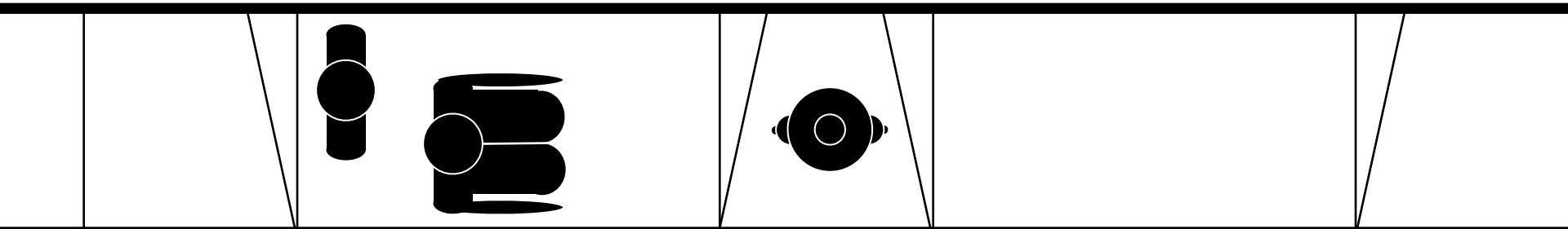
Human-Computer Interaction Lab
Computer Science Department
University of Maryland, College Park

You



Your Friend





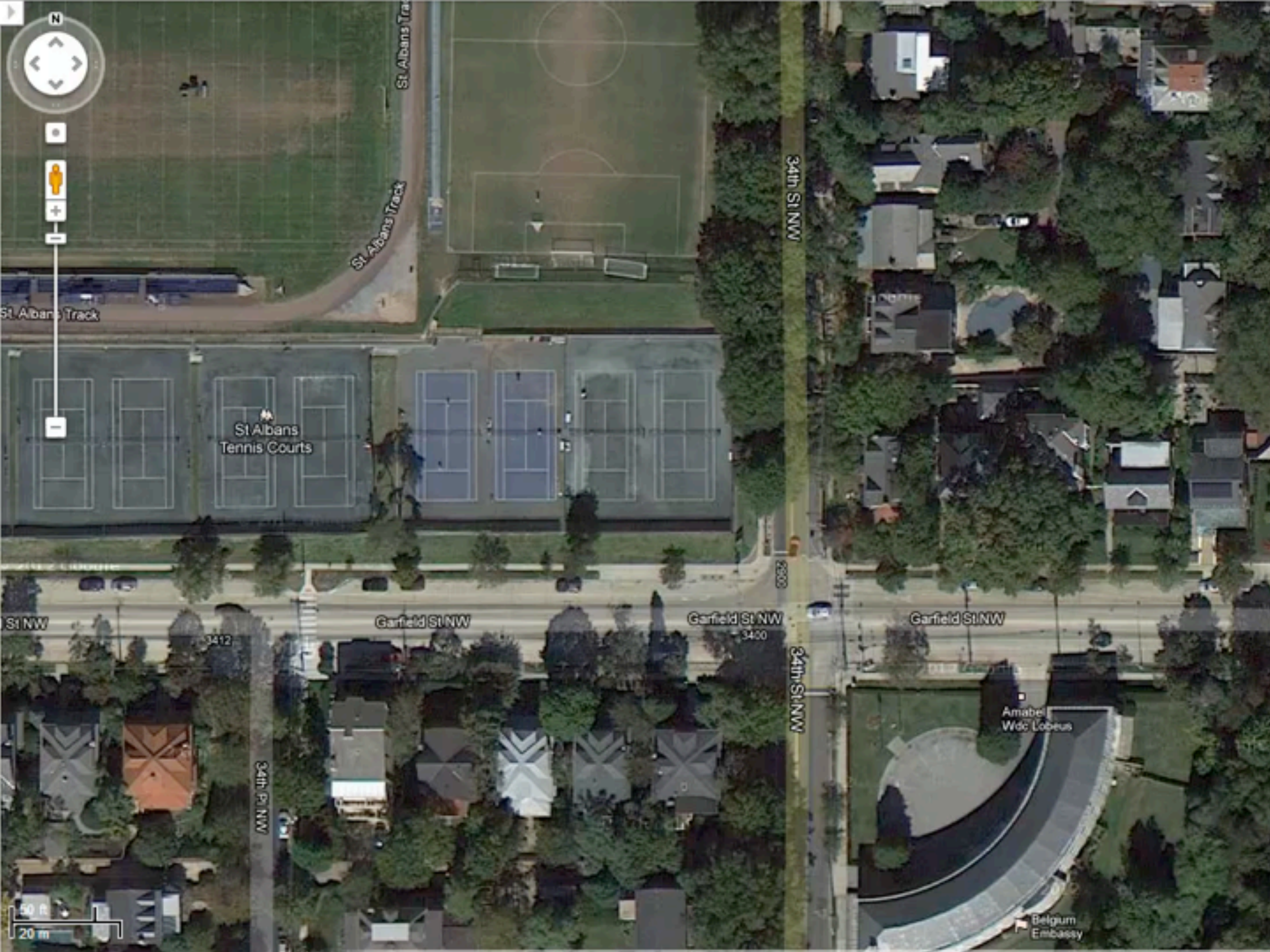


No curb ramp!

The problem is not just that there are inaccessible areas of cities, but also that there are currently few methods for us to determine them **a priori**



No curb ramp!



St. Albans Tra

St. Albans Track

St. Albans Track

St. Albans
Tennis Courts

34th St NW

2900

34th St NW

St NW

Garfield St NW

Garfield St NW

Garfield St NW

3412

3400

Amabel
Wed' Lobes

Belgium
Embassy

34th Pl NW

50 m
20 m

Manual Labeling | Labeling Interface

The screenshot shows a web browser window titled "Project Sidewalk" with a search bar and various bookmarks. The main interface is for finding and labeling curb ramps. It features a central Google Street View image of a street intersection. To the left of the image are three icons: a person walking (labeled "Explore"), a wheelchair on a ramp (labeled "Curb Ramp"), and a wheelchair on a street (labeled "Missing Curb Ramp"). Above the image are "Zoom In", "Zoom Out", "Undo", and "Redo" buttons. To the right is a "Status" panel with a "Mission" section stating the goal is to find and label curb ramps, a "Progress" section showing 0 out of 5 completed, and a "Labeled Landmarks" section showing 0 curb ramp and 0 missing curb ramp labels. Below this is a "Keyboard Shortcuts" section and an "Observed area" map showing a 1.4% area. At the bottom, there is a text input field for comments and "Skip" and "Submit" buttons.

Project Sidewalk

Find and label the following

Explore

Curb Ramp

Missing Curb Ramp

Zoom In

Zoom Out

Undo

Redo

Status

Mission:
Your mission is to **find and label** the presence and absence of curb ramps at intersections.

Progress:
You have finished 0 out of 5.

Labeled Landmarks:

0 0

You've submitted 0 curb ramp labels and 0 missing curb ramp labels.

Keyboard Shortcuts:
ESC: Cancel drawing
Z / Shift+Z: Zoom in / Zoom out

Observed area: 1.4%

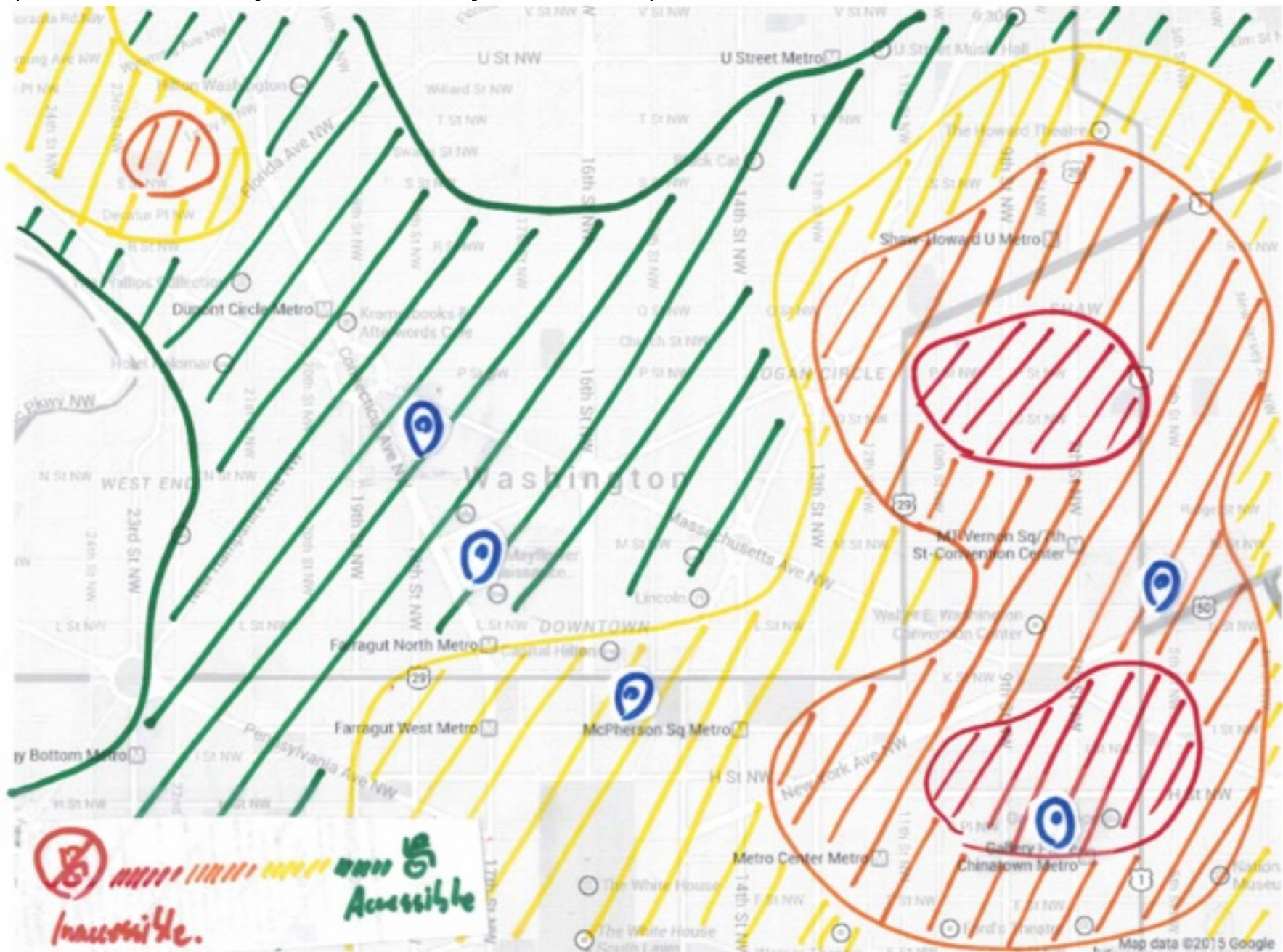
Please enter any comments about this intersection that may affect people with mobility impairment (optional)

Skip

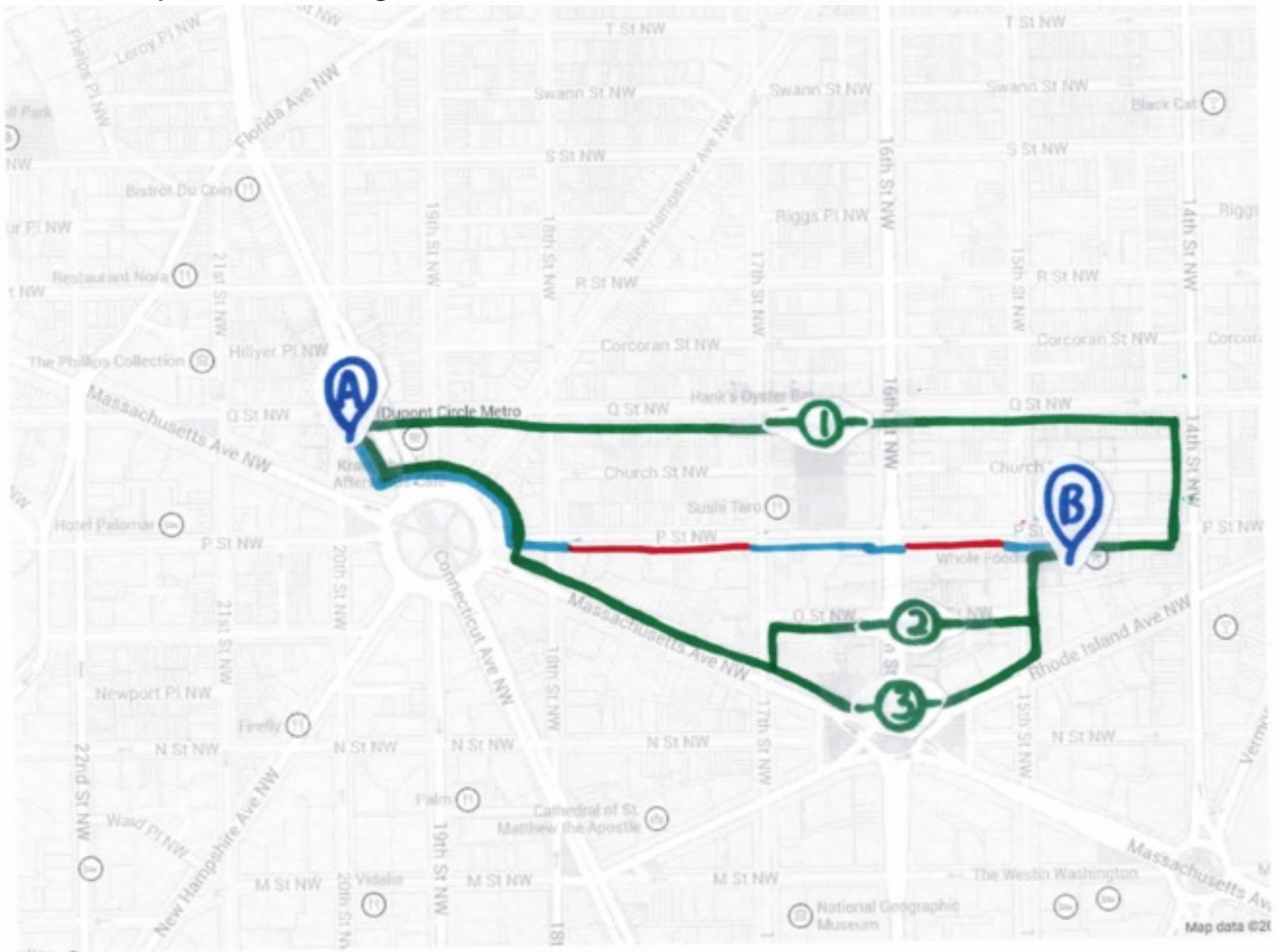
Submit

3x

Exploration of City Accessibility: Heat map



Accessibility-aware Navigation: k-Accessible Routes



@kotarohara_en

kotaro@cs.umd.edu